

Straightpoint RLP

Pienikokoinen ja kevyt mittalaite erilaisiin punnituksiin ja testauksiin.

13 kpl malleja 250 kg aina 300 tonniin saakka.

Radio-Link Plus toimitetaan 3 Hz tiedonsiirtonopeudella, konfiguroitavissa jopa 200 Hz.

Tiedonsiirto langattomasti käyttäen viimeisintä IEEE 802.15.4 (2,4 GHz) teknologiaa. Tämä takaa turvallisen ja virheettömän tiedonsiirron Handheld-käsinäyttölaitteelle staattisissa ja dynaamisissa mittauksissa.

Mittaustulokset on helposti siirrettävissä langattomasti data-ohjelmaan. Ohjelmisto sallii jopa 100 Straightpoint mittalaitteen samanaikaisen käytön. Tulokset ovat katsottavissa Excell-pohjaisella taulukolla ja niistä on helppo tehdä mittauspöytäkirjat.

Tiiveysluokka anturilla IP-67. Hyvä ympäristön häiriöiden sietokyky.

Turvallinen työskentely, radiolähtetimen toimintamatka n. 250m vapaassa tilassa.

Markkinoiden paras pariston kesto aika. Punnitusanturilla n. 1200 tuntia ja käsinäyttölaitteella n. 400 tuntia. Käytössä on AA-paristot.

Näyttölaitteella ohjataan päälle/pois, taaraustoimintoja, huipunpitoa ja painoyksiköitä.

Ylikuormasta varoittava äänisignaali.

Lisätarvikkeina saatavissa mm laite T24-AO1i virtaviestien ulosottoon 0-10 V, 0-5 V, 4-20mA

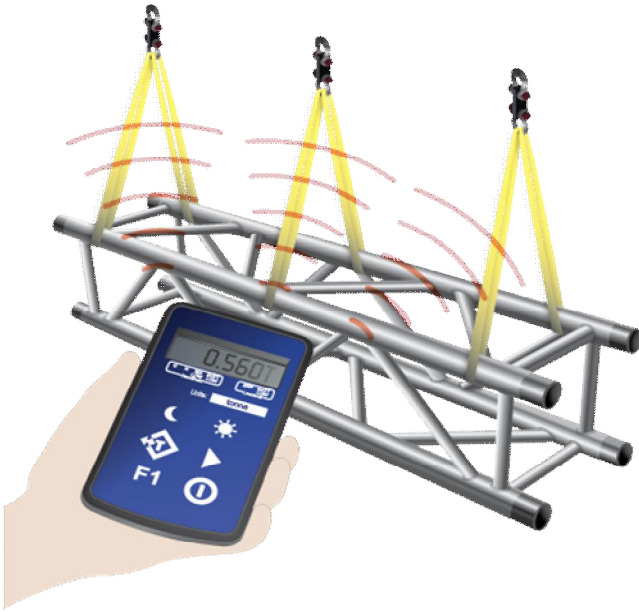
Katso lisätarvikkeet valmistajan esitteestä

Radiolink plus -antureita voidaan kytkeä COMPOUND-järjestelmäksi, jossa on maksimissaan 12 kpl RLP plus -antureita. Käsinäyttölaitteesta nähdään kokonaispaino ja paino yksittäisiltä antureilta. Painot voi myös tulostaa printterillä T24 PR1 tai liittää laitteisto muihin edellä mainittuihin lisälaitteisiin. Kts. alla oleva Compound-esite.

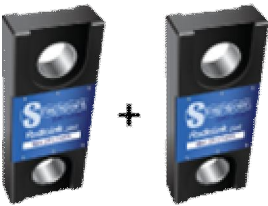
Straightpoint RLP toimitetaan lukittavassa kuljetuslaukussa. Laitteet on sovitettu laukun pehmusteisiin siten että ne eivät kuljetuksessa pääse liikkumaan eivätkä kolhiintumaan. Mukana tulee kalibrointitodistus.



Compound -punnitusjärjestelmä. Kuvan laitteisto muodostuu 3 kpl Radiolink plus -antureita ja näyttölaitteesta.



Näyttölaitteesta nähdään kokonaispaino ja erillispainot kultakin anturilta. Punnitustulokset voidaan myös tulostaa printterillä, tai näyttää lisänäyttölaitteesta.



Punnitusantureita voidaan liittää järjestelmään enimmillään 12 kpl. Laitteisto toimitetaan kalibroituna, mukana seuraa todistukset. Kaikki tarvikkeet on pakattu lukittaviin kuljetuslaukkuihin.



Radiolink Compound -järjestelmällä saadaan suuri punnituskapasiteetti mahtumaan pieneen tilaan ja helposti siirrettyä työkohteesta toiseen.



radiolink plus



Capable of both weighing and dynamic load monitoring, the latest Radiolink Plus is constructed of high-quality aircraft grade aluminium and features an advanced internal design structure. This internal design structure not only provides the product with an unrivalled strength to weight ratio but it also allows the use of a separate internal sealed enclosure providing the load cell's electronic components with IP67 environmental protection even with the battery cover plate missing, making this industry leading dynamometer even more suitable for use in the harshest environments.

Featuring industry leading wireless technology and range, the versatile Radiolink Plus is supplied with an update rate of 3 Hz and can be easily configured to run at industry leading speeds of up to 200 Hz. Data is transmitted wirelessly utilising the latest in IEEE 802.15.4 (2.4 GHz) technology providing safe, high integrity, error free transmission of both static weight and dynamic load to a wireless handheld controller.

Designed for measurement of both static and dynamic loads the Radiolink Plus can also be used in combination with our range of high speed wireless data logging software allowing for simultaneous control, display and real time data logging of up to 100 Straightpoint telemetry load cells. A.csv file format is used for data logging and opens in MS Excel, allowing easy visual presentation of the logged data and simple test certificate generation.

The Radiolink Plus utilises easily sourced AA alkaline batteries and features advanced circuitry designed to protect the unit from damage associated with incorrectly installed batteries. This advanced circuitry extends battery life and the use of easily sourced alkaline batteries eliminates issues associated with rechargeable battery pack charging, failure and replacement.

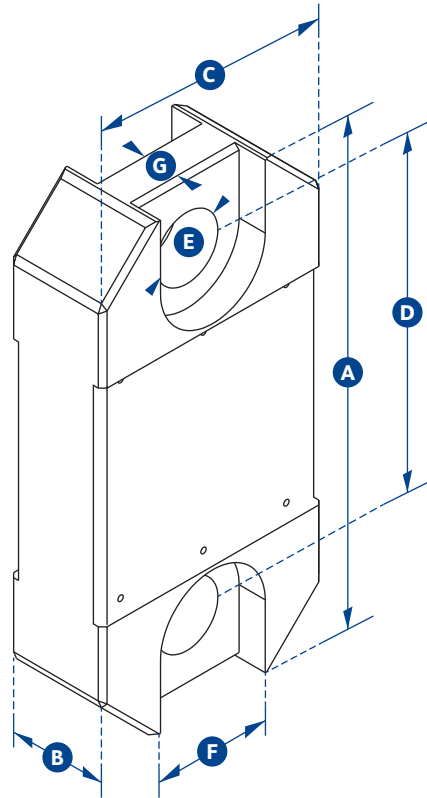
A full array of wireless accessories are also available including signal boosters, LED wireless scoreboards and base stations with analogue (4-20mA, 0-10v, 0-5v) or digital (RS232/485, Modbus RTU, and ASCII serial communications protocol) outputs.

It is easy to see why, globally, the Radiolink Plus is the number one choice for weighing and dynamic load monitoring in critical lift planning and execution.

Features and benefits:

- Proprietary 2.4 GHz wireless
- Industry leading wireless range
- Error free data transmission
- Unrivalled resolution
- Environmentally sealed
- Audible overload alarm
- Unmatched battery life
- Internal antennae
- Compact size
- Remote on-off
- Lightweight
- Peak hold
- Advanced options available
- Tare
- Design validated by F.E.A.

metric specifications



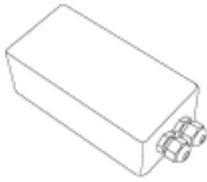
radiolink plus

Part Number	RLP1T	RLP2T5	RLP5T	RLP12T	RLP25T	RLP35T	RLP50T	RLP75T	RLP100T	RLP150T	RLP200T	RLP250T	RLP300T
Capacity	1,000kg	2.5te	5te	12te	25te	35te	50te	75te	100te	150te	200te	250te	300te
Resolution	0.5kg	0.001te	0.001te	0.002te	0.005te	0.005te	0.01te	0.01te	0.05te	0.05te	0.1te	0.1te	0.1te
Units	kg	te	te	te	te	te	te	te	te	te	te	te	te
Weight	1.4kg	1.4kg	2kg	3.2kg	5kg	8.6kg	11.5kg	16kg	34kg	46kg	72kg	72kg	118kg
Safety Factor	12:1	5:1	5:1	5:1	5:1	5:1	5:1	5:1	5:1	4:1	5:1	4:1	5:1
Battery Type	Handheld 2 x AA/Load cell 4 x AA												
Battery Life	Handheld 60 hours/Load cell 1200 hours continuous												
Display Type	6 digit 25mm LCD												
Operating Temp	-10°C to +50°C												
Accuracy	± 0.3% of applied load												
Frequency	2.4 GHz												
System Range	700 metres												
Data Rate	3 Hz - up to 200 Hz can be ordered for dynamic load monitoring applications												
Protection	IP67												
Dimension A	204	204	249	305	340	393	424	470	608	670	700	700	806
Dimension B	43	43	43	47	60	75	75	75	99	99	144	144	150
Dimension C	101	101	101	101	115	126	163	202	255	303	320	320	426
Dimension D	146	146	165	193	215	225	230	260	320	360	350	350	350
Dimension E	24.5	24.5	38	47.5	55	60	76	76	109	109	132	132	160
Dimension F	48	48	66	Not available on this capacity									
Dimension G	19	19	32	Not available on this capacity									
Crosby Shackle	G2130						G2140						
Loading Pin Ø	19	19	25	35	51	57	57	70	83	95	121	127	152

WIRELESS ACCESSORIES

Our range of wireless accessories may be used with the load cells:

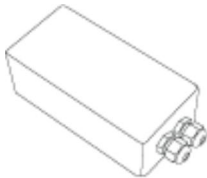
[Radiolink Plus](#), [Compound Plus](#), [Wireless Loadshackle](#) and [Wireless Compression Load Cell](#) ranges.



SW-OAM **Wireless overload alarm module**

[Datasheet](#)
[Download](#)

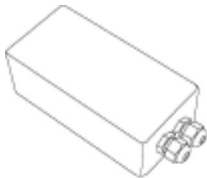
The SW-OAM is a wireless relay module featuring audio and visual warning indicators. The unit's two set point alarms can be triggered from a single or summed group of up to eight Straightpoint wireless load cells. The SW-OAM is ideal as a Wireless Overload Detection System.



SW-A01i **Wireless base station with analogue output**

[Datasheet](#)
[Download](#)

The SW-A01i provides a configurable analog output for any single Straightpoint Wireless Load Cell and is ideal for integration to a PC, PLC or other Data Acquisition Systems. Housed in a NEMA 4 enclosure the output can be selected from pre-calibrated voltage and current ranges of 0-5vdc, +-5vdc, 0-10vdc, +-10vdc, 0-20mA, 4-20mA.



SW-SO **Serial output ASCII string module**

[Datasheet](#)
[Download](#)

Ideal for integration to a PC, PLC or other device requiring a simple RS232 serial input, this module allows for a user defined ASCII string which can include individual or summed data from up to eight Straightpoint Wireless Load Cells.



SW-RWT **Rugged Tablet**

[Datasheet](#)
[Download](#)

The SW-RWT tablet is the latest generation fully-rugged tablets. Featuring an array of integrated options, and a sleek, sophisticated design, the SW-RWT will change the way you look at tablets. With a MIL-STD-810G rating and Windows® 7 Pro, the SW-RWT can go from the boardroom to the work site without missing a beat.

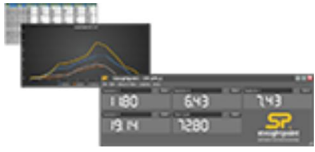
Wireless Load Cell



SW-MWLC

Multiple wireless load cell controller software

[Datasheet](#)
[Download](#)



This software for Windows PC's allows up to 24 of our wireless loadcells to be viewed and logged cable free to a CSV file. You can configure the number of loadcells (max 24), and set extra channels to sum data or record peaks etc. These configurations can be saved and re-loaded at any time.



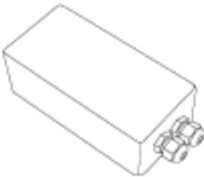
SW-SD

Wireless slave display

[Datasheet](#)
[Download](#)



This 100mm (4") scoreboard LED display is wireless and viewable for up to 150 ft. Perfect for installation on a crane gantry the unit operates on 110-240 VAC and display's an individual load or summed load for up to eight Straightpoint Wireless devices.



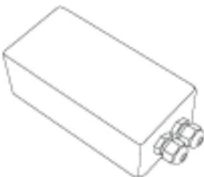
SW-SB

Wireless signal booster

[Datasheet](#)
[Download](#)



The SW-SB signal booster/repeater module is battery operated and easily pairs to any Straightpoint Wireless device e.g. load cell, accessories, and software solutions within range, quickly increasing coverage and extending range.



SW-GW1

Modbus RTU/ASCII Gateway

[Datasheet](#)
[Download](#)



The SW-GW1 is a Modbus interface gateway that provides a simple interface allowing users to gather data from Straightpoint Wireless devices using either the standard Modbus RTU protocol or a simple ASCII protocol.